








Forestry grapple

SK-950
SK-1400

 Fredbjergvej 132, Denmark-9640 Farsø. www.fransgard.dk	
Model	<input type="text" value="SK-950"/>
Kg.	<input type="text" value="178"/>
Serie nr.	<input type="text"/>
 Made in Denmark	
	

 Fredbjergvej 132, Denmark-9640 Farsø. www.fransgard.dk	
Model	<input type="text" value="SK-1400"/>
Kg.	<input type="text" value="210"/>
Serie nr.	<input type="text"/>
 Made in Denmark	
	

Fransgård Maskinfabrik A/S
Fredbjergvej 132, Fredbjerg
DK - 9640 Farsø
Phone: +45 98 63 21 22
www.fransgard.dk
mail@fransgard.dk

CONTENTS

Page

Technical data.....	1
Safety instructions.....	2
Personnel safety.....	3
Safety precautions during use.....	3
Characteristics of the machine.....	3
Connecting to tractor.....	4-5
Maintenance.....	5
Renewal of hydraulic hoses.....	6
Ordering spare parts.....	6
Storage.....	6
Spare part list.....	8

TECHNICAL DATA forestry grapple SK-950/1400

Cylinder diameter.....	80 mm / 3"
Cylinder closing power.....	70 KN (7000 kg) /180 bar
Working pressure, min.....	180 bar
Max. Opening.....	950/1400 mm / 37"/55"
Weight.....	178 / 210 kg - 392 / 463 Lbs
Tractor power, max.....	25-50 HP / 18-36 kW

SAFETY INSTRUCTIONS

*** WARNING!!!**

Pay close attention to these points: all safety instructions are marked with this symbol *****, it is extremely important that you read them.

1. Become familiar with the instruction book; read the safety instructions through carefully. Before beginning to use the forestry claw, the user (the person that is to manipulate the forestry claw) must be familiar with this instruction book, i.e. have read it.
2. The user must be minimum 18 years of age.
3. The user must not be under the influence of alcohol, narcotic substances or medicines.
4. All loose parts that do not belong to the machine must be removed.
5. All directions for use must be studied carefully.
6. Position the machine in such a way that it cannot move during: maintenance, cleaning, adjustment, assembly of accessories or spare parts, as well as under storage.
7. The construction of the machine must not be altered if it jeopardizes safety in any way.
8. Do not use the machine for other purposes than those described in the instruction book.
9. The safety radius is 65 FT - 20 m. There may not, at any time, be people inside this area, when the machine is in use. Pay particular attention to children in the vicinity.
10. Never leave the forestry claw hanging freely in the air.
11. Do not wear clothing that is ripped or too large (can catch the hydraulic levers).
12. Always operate the forestry tong from inside the tractor, never from the outside. Standing under the forestry tong or its load is extremely dangerous and must not be allowed.
13. After one hour's use, check that all nuts are tight. Thereafter, check them regularly.
14. Pay attention to any possible leaks from the hydraulic system. Any leaks must be corrected immediately. NB! Oil pollutes the environment.
15. Use only original spare parts and accessories.
16. The forestry claw is intended to be used for the local transport of tree trunks from the felling area to the intermediate log dump. Transport on public roads is not allowed.

*** PERSONAL SAFETY!!!**

Working in conditions with high levels of noise can lead to hearing damage, and even to deafness. The noise level depends to some extent on the cabin insulation of the tractor, so if necessary, use suitable hearing protection.

Avoid physical contact with the oil during maintenance/repairs; use gloves.

*** ROAD TRANSPORT!!!**

- During transport on public roads, all applicable laws must be followed regarding lights etc., as well as fitting of warning triangles on the tractor.
- Keep reflectors and lights clean.
- Warning! Due to changes in weight, the steering abilities of the tractor will be reduced.
- Absolutely no load is permitted in the forestry claw during transport on public roads.

SAFETY PRECAUTIONS DURING USE

For the implement to work optimally, it needs to be inspected regularly. After 1 hour's use, all hydraulic hoses and cylinders must be inspected for oil leaks, and inspection must be carried out at regular intervals in the future. If there are items of equipment or safety equipment that are not specifically mentioned here in this instruction book, they do not belong to the normal program from Fransgård.

CHANGES IN CONSTRUCTION

Changes in the construction of the forestry tong may only be made with the expressed permission of the manufacturer. If this is not observed, then limitations to the normal working capacity, reductions to the safety and expected working life of the machine must be expected.

CHARACTERISTICS OF THE MACHINE (in brief)

The forestry claw is intended to be used for the local transport of tree trunks from the felling area to the intermediate log dump, other uses are not permitted without prior permission from the manufacturer. If any other use than that mentioned above takes place, it will render the guarantee null and void.

CONNECTION to TRACTOR

The forestry claw is to stand in its normal position, i.e.: lowered onto a flat, solid surface, resting upon the tong and the support leg. When this is ensured, connection is accomplished as follows:

1. Drive carefully towards the forestry claw, so it does not tip over during mounting
2. Lift the forestry claw, but exercise caution; sudden lateral movement may easily occur, as there is no oil in the hydraulic system. Adjust the tractors lift arms, side limiters so that the forestry tong is centered and locked into the middle.
3. Make sure that the hydraulic levers in the tractor are in neutral position.
4. Connect the hydraulic hoses to the hydraulic outlets on the tractor.
5. Fill the cylinder with oil by way of the hydraulic levers. During this procedure, there should be ample room around the forestry claw, as it may, as previously mentioned, react unpredictably due to air in the system. Run backwards and forwards a few times so that all the air is removed from the system.
6. Measure the length of the hydraulic hoses; they should neither be too long or too short.
Pay particular attention to the danger of projections or other elements of the tractor's lift construction fouling the hydraulic hoses and if necessary tie the hoses down.

DETACHMENT from TRACTOR

1. Close the grapple claws wide and lower the forestry claw onto a flat, stable surface.
2. De-activate the hydraulic control valve, and take off the hydraulic hoses.
3. Drive the tractor carefully away from the implement

* **WARNING!!!**

C. Be especially careful on uneven terrain.

In such situations the forestry tong must be lowered immediately, so the rear end of the logs always rests on the ground. As the Locking lever are in the “floating” position, the consequences of allowing long logs to hang freely in the air can be that they may swing out to one side and result in overturning the tractor.

H. During transport, the logs may “pack” a little, with the result that they have a smaller cross-section. Activate the grab cylinder occasionally during transport, so that the claws tighten their grip, and do not drop the logs.

J. When driving with the forestry claw without logs, the grapple must be closed completely, and the machine locked in the center position and by the locking lever.

SAFETY during MAINTENANCE

Before beginning maintenance tasks i.e.: adjustment, cleaning, assembly or repairs, the following should be observed:

1. All power take-off equipment from the tractor must be disengaged.
2. The forestry claw must be positioned at the lowest position on a flat, stable surface.
3. Turn off the tractor.
4. WAIT until all moving parts have come to a standstill.
5. Support the forestry claw, so that it cannot move, even if the hydraulic levers should be used.

MAINTENANCE

A thorough and always timely maintenance of the forestry claw is a good guarantee of operational reliability and long working life.

- Always keep dismantled parts etc. clean during repairs.
- Make sure that no oil is allowed to drain out of the machine.
- Always use correct tools when dismantling parts, to avoid unnecessary damage.
- Always recognize defects at as early a stage as possible, thereby avoiding further defects and unnecessary additional expenses.
- Always use original Fransgård spare parts.

LUBRICATION

The forestry claw must be lubricated after each 16 hours running time, so all moving parts are continually well-greased.

HYDRAULICS

Hydraulic hoses, pipes and outlets must be inspected regularly for leaks, faults or indication thereof. In order to avoid further damage, worn or broken parts must be replaced immediately.

When assembling hydraulic components it is important that hoses are cleaned and dust, rubber residue, etc, are removed before assembly.

RENEWAL of HYDRAULIC HOSES

Correctly fitted hydraulic hoses last longest!

When replacing, please note the following:

- Keep the hose clean – both inside and outside.
- Make sure that the hoses are placed according to the instructions, and that they are free to move in all working directions.
- The hoses must not be twisted, as this reduces their working life considerably.
- After assembly, the hose-joints should be inspected for any leaks.

ORDERING SPARE PARTS

When ordering original Fransgård spare parts, please quote the following:

- Machine description
- Production number
- Part number of the required spare part
- Name of spare part
- Name and address of orderer.
- Required method of dispatch (urgent/normal)

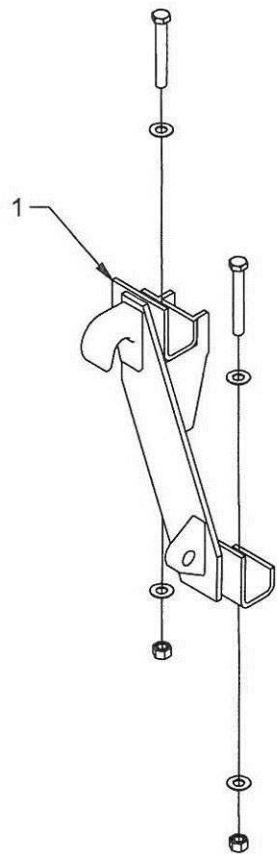
STORAGE

If the forestry claw is not used for any long period of time, it should be stored in a safe and dry place.

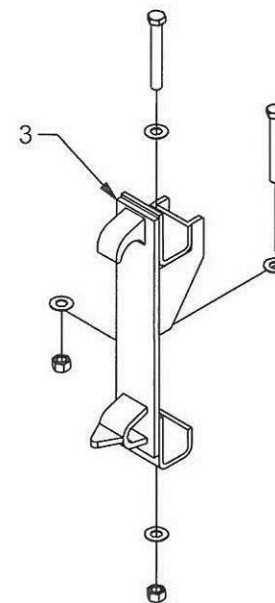
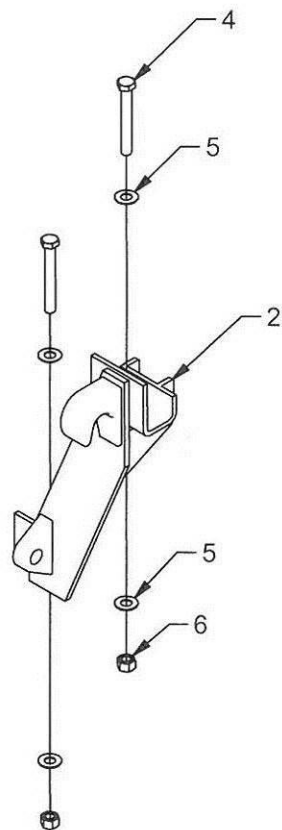
Before it is put away, it should be lubricated with grease through all grease nipples. If the paint work has been damaged, it is a good idea to repaint the applicable parts. If the paint that is missing has been worn away, it may be better to cover these areas with oil or grease.

DISPOSAL of the MACHINE

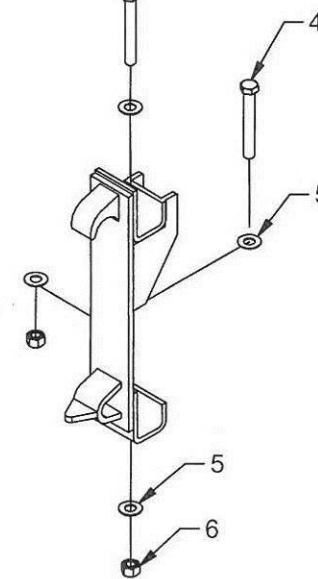
- Exercise caution when dismantling the machine, as many of the parts are very heavy.
- Make sure that the dismantled parts and oil are taken to a reutilization unit and a registered chemical disposal plant.



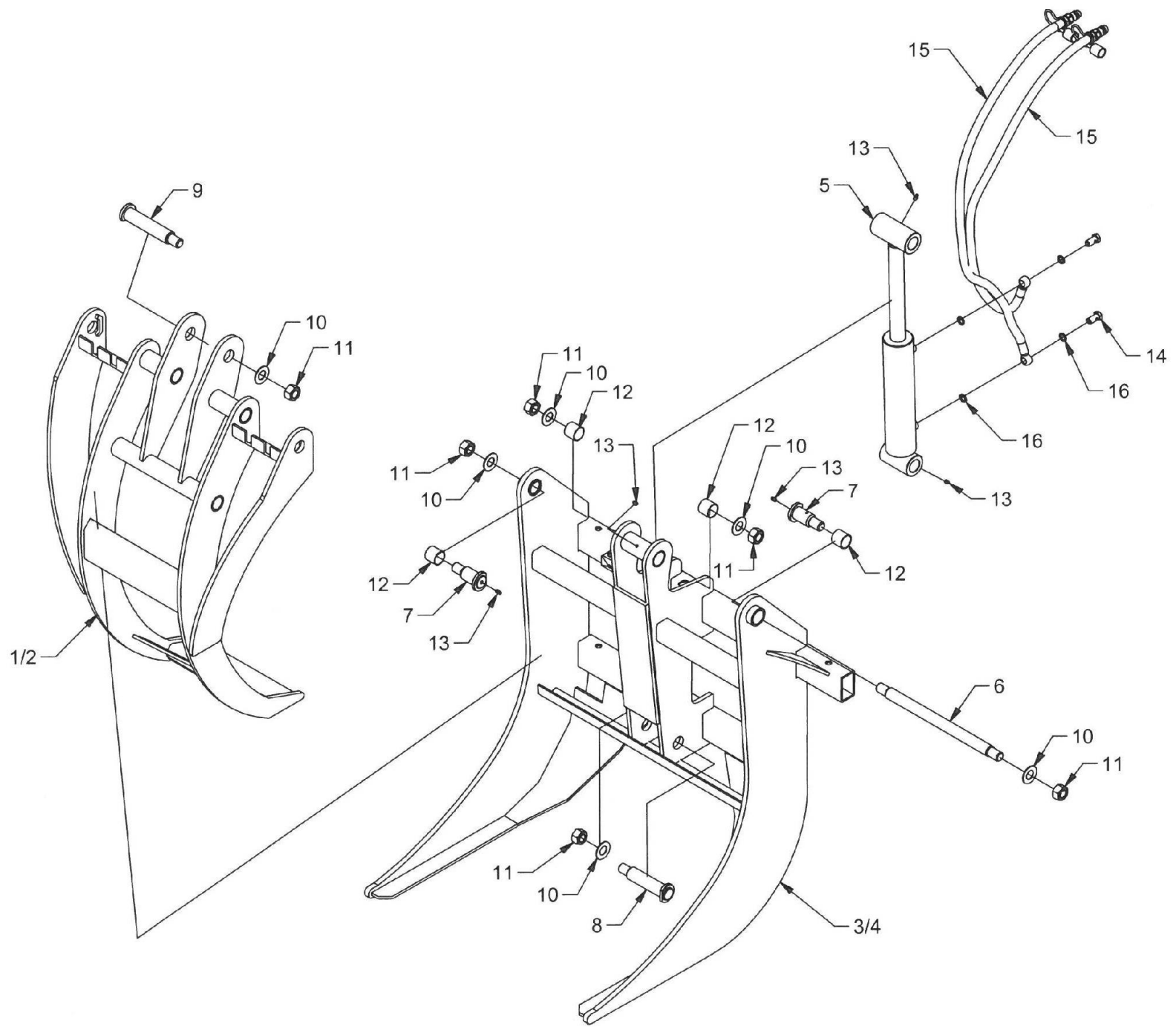
Model: EURO
Part nr.: 1110



Model: SMS
Part nr.: 1112



Nr. No. Nr. No.	Varenr. Part no. Teil Nr. No.de pièce	Antal Quantity Anzahl Nombre	Beskrivelse	Description	Bezeichnung	Désignation	Bemærkninger Remarks Bemerkung Remarques
1	10910	1	Beslag v.	Bracket l.	Halter l.	Patte de fixation	
2	10911	1	Beslag h.	Bracket r.	Halter r.	Patte de fixation	
3	10912	2	Beslag	Bracket	Halter	Patte de fixation	
4	740211615	4	Bolt	Bolt	Bolzen	Boulon	M16x120
5	740610020	8	Skive	Disk	Scheibe	Bague	17x35x3,0mm.
FZB							
6	740420016	1	Låsemøtrik	Lock nut	Gegenmutter	Ecrou de freinage	M16



Nr. No. Nr. No.	Varenr. Part no. Teil Nr. No.de pièce	Antal Quantity Anzahl Nombre	Beskrivelse	Description	Bezeichnung	Désignation	Bemærkninger Remarks Bemerkung Remarques
1	10900	1	Overklo	Claw	Klaue, obere	Châssis principal	SK-950
2	11000	1	Overklo	Claw	Klaue, obere	Châssis principal	SK-1400
3	10901	1	Underklo	Claw	Klaue, untere	Châssis principal	SK-950
4	11001	1	Underklo	Claw	Klaue, untere	Châssis principal	SK-1400
5	11005	1	Hydraulikcylinder	Hydraulic cylinder	Hydraulikzylinder	Cylindre de hydrauliques	ø70/40x210
6	11002	1	Bolt	Bolt	Bolzen	Boulon	446mm.
7	11003	2	Bolt	Bolt	Bolzen	Boulon	100mm.
8	11007	1	Bolt	Bolt	Bolzen	Boulon	175mm.
9	11008	1	Bolt	Bolt	Bolzen	Boulon	205mm.
10	522640	6	Skive	Disk	Scheibe	Bague	26x50x2,0mm. FZB
11	740400024	6	Låsemøtrik	Lock nut	Gegenmutter	Ecrou de freinage	M24
12	10537	4	Bøsning	Sleeve	Buchse	Douilles	
13	881500240	5	Smørenippel	Lubricator nipple	Schmiernippel	Grasseur	M8x1,25 mm.
14	2540940606	2	Banjobolt	Bolt	Bolzen	Boulon	3/8
15	10906	2	Hydr. slange	Hydr. hose	Hydr. Schlauch	Tuyau hydraulique	3/8x1400
16	42418	4	Pakning	Rubber gasket	Gummidichtung	Joint en caoutchouc	3/8"

EC Declaration of Conformity

16. september 2022

Manufacturer

Name: Fransgård Maskinfabrik A/S
Address: Fredbjergvej 130, Fredbjerg
DK 9640 Farsø
Country: Danmark
Telephone: +45 98632122

which itself brings together the technical file

hereby declare that

Product

No.: SK-950
Name: SK-950 Skovklo
Type: SK-950 Skovklo
Serial no.:
Company Name:

is in conformity with

Directive 2006/42/EC of the European Parliament and of the Council of 17
May 2006 on machinery

Position: Udviklingschef
Name: Bjørn V. Kristensen
Company Name: Fransgård
Maskinfabrik A/S

Date

Bjørn V. Kristensen
Signature

EC Declaration of Conformity

22. juni 2023

Manufacturer

Name: Fransgård Maskinfabrik A/S
Address: Fredbjergvej 130, Fredbjerg
DK 9640 Farsø
Country: Danmark
Telephone: +45 98632122

which itself brings together the technical file

hereby declare that

Product

No.: SK-1400
Name: SK-1400 Skovklo
Type: Sk-1400
Serial no.:
Company Name:

is in conformity with

Directive 2006/42/EC of the European Parliament and of the Council of 17
May 2006 on machinery

Position: Udviklingschef
Name: Bjørn V. Kristensen
Company Name: Fransgård
Maskinfabrik A/S

Bjørn V. Kristensen

Date

Signature

